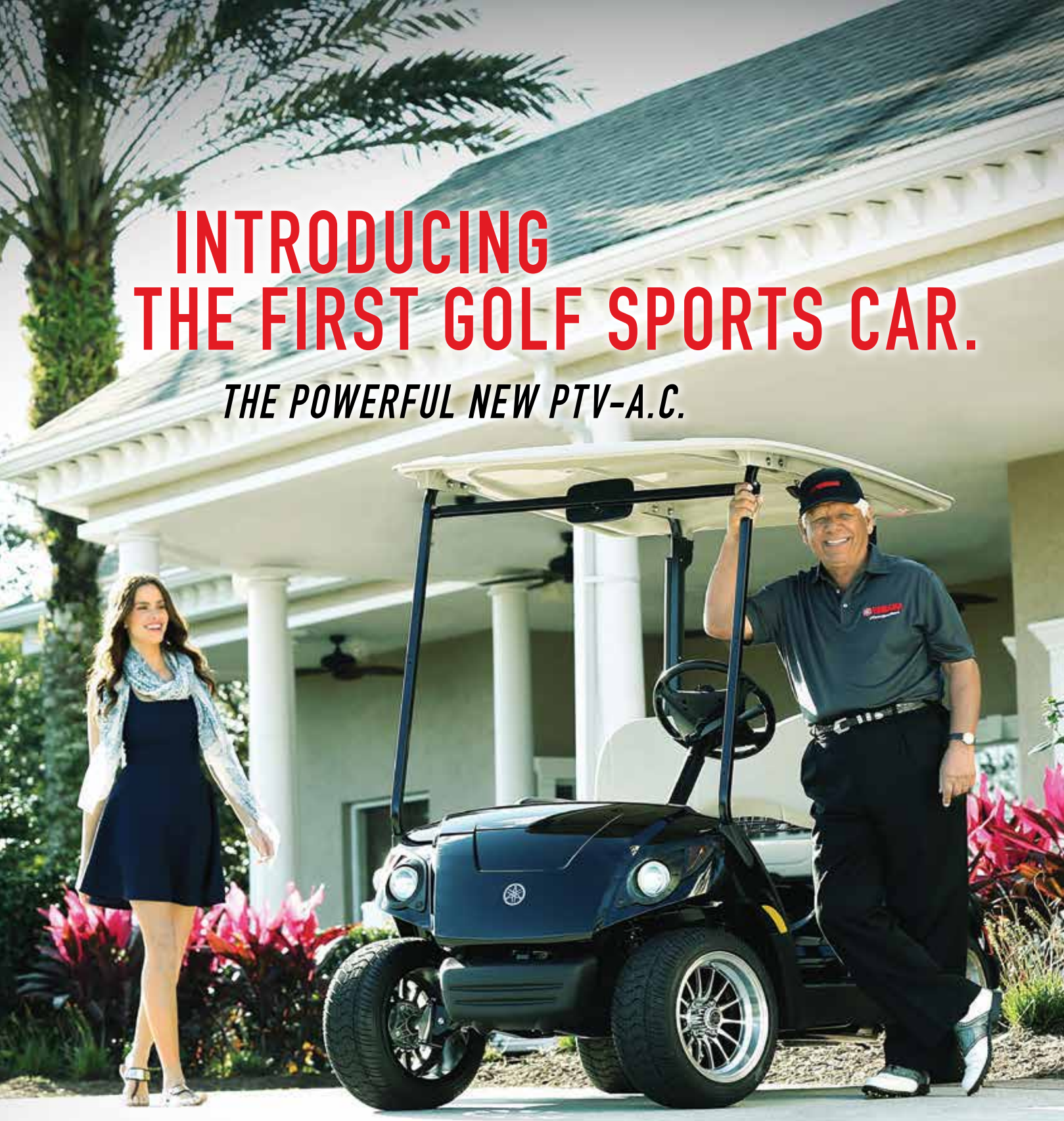




# INTRODUCING THE FIRST GOLF SPORTS CAR.

*THE POWERFUL NEW PTV-A.C.*



Discover the thrill of a speedy 6.7 horsepower motor and a sports car-like dashboard in our most stylish electric car yet.

Compare Horsepower	
Yamaha A.C.	6.7 hp
EZGO RXV	4.4 hp
Club Car Precedent	3.3 hp



## SPECIFICATIONS

### DIMENSIONS

OVERALL LENGTH	2,395 mm	94.3 inches
OVERALL WIDTH	1,200 mm	47.2 inches
OVERALL HEIGHT WITH SUNTOP	1,821 mm	71.7 inches
OVERALL HEIGHT WITHOUT SUNTOP	1,222 mm	48.1 inches
WHEELBASE	1,640 mm	64.6 inches
FRONT WHEEL TREAD	870 mm	34.3 inches
REAR WHEEL TREAD	980 mm	38.6 inches
MINIMUM GROUND CLEARANCE	148 mm	5.8 inches
FLOOR BOARD HEIGHT	342 mm	13.5 inches

### MOTOR / DRIVE TRAIN / POWER SUPPLY

MOTOR	48-volt AC
OUTPUT RATING	5.0 kW (6.7 hp)
MOTOR CONTROL UNIT	350 amp AC
TRANSAXLE	Mechanical, 2 rear wheel
BATTERIES	STANDARD: Six 8-volt Trojan T875 Batteries OPTIONAL: Eight 6-volt T105 Batteries
CHARGER	YAMAHA-built automatic microprocessor-based high frequency switching regulated charger.

### CHASSIS

FRAME	Rectangular tube structure
BODY	Injection molded resin
STEERING	Rack and Pinion
FRONT WHEEL SUSPENSION SYSTEM	Strut type
REAR WHEEL SUSPENSION SYSTEM	Mono-linkage
BRAKES	Self-adjusting rear drum
SEATING	Seamless, fabric-backed vinyl bonded to pure, virgin foam contoured seat cushions and matted to a wrap and moisture-resistant polypropylen bottom strengthened with plated steel inserts
BUMPERS	Front and rear 5 MPH energy-absorbing bumpers

### PERFORMANCE

MAXIMUM FORWARD SPEED (ELECTRIC)	31 km/hr	19.5 mph
MAX REVERSE SPEED (ELECTRIC)	8.1 km/hr	5.0 mph
MINIMUM TURNING RADIUS	3.2 m	10.5 feet

### GENERAL

DRY WEIGHT (ELECTRIC W/ SUNTOP)	294	648 lbs
DRY WEIGHT W/ TROJAN T-875 BATTERIES	465	1025 lbs
TIRE SIZE	205/65-10 DOT	4 ply
SEATING CAPACITY	2 persons	
AVAILABLE PAINT COLORS	Glacier, Emerald, Tanzanite, Sandstone Metallic, Moonstone Metallic, Onyx Metallic, Jasper Metallic	
AVAILABLE SEAT COLOR	Stone, Black	
AVAILABLE TOP COLOR	Stone	

### WARRANTY

WARRANTY	Standard 4-year limited vehicle warranty
----------	--

Specifications subject to change without notice.

## CHOOSE YOUR COLOR

Your choice of seven lustrous colors, including four brilliant metallics.

